

CLEVR EA

System Manual

Risk warning

Before you begin trading on Real account please carefully consider your investment goals, risk and experience you have. It should be noted that Forex is a leverage based market. It should be remembered that leverage can work both in your advantage and disadvantage as well. Therefore there is high risk of losing a part or all of your financial input placed on your account and because of that you should remember to trade with the amount of money which you can lose without taking any influential financial damage.

Disclaimer

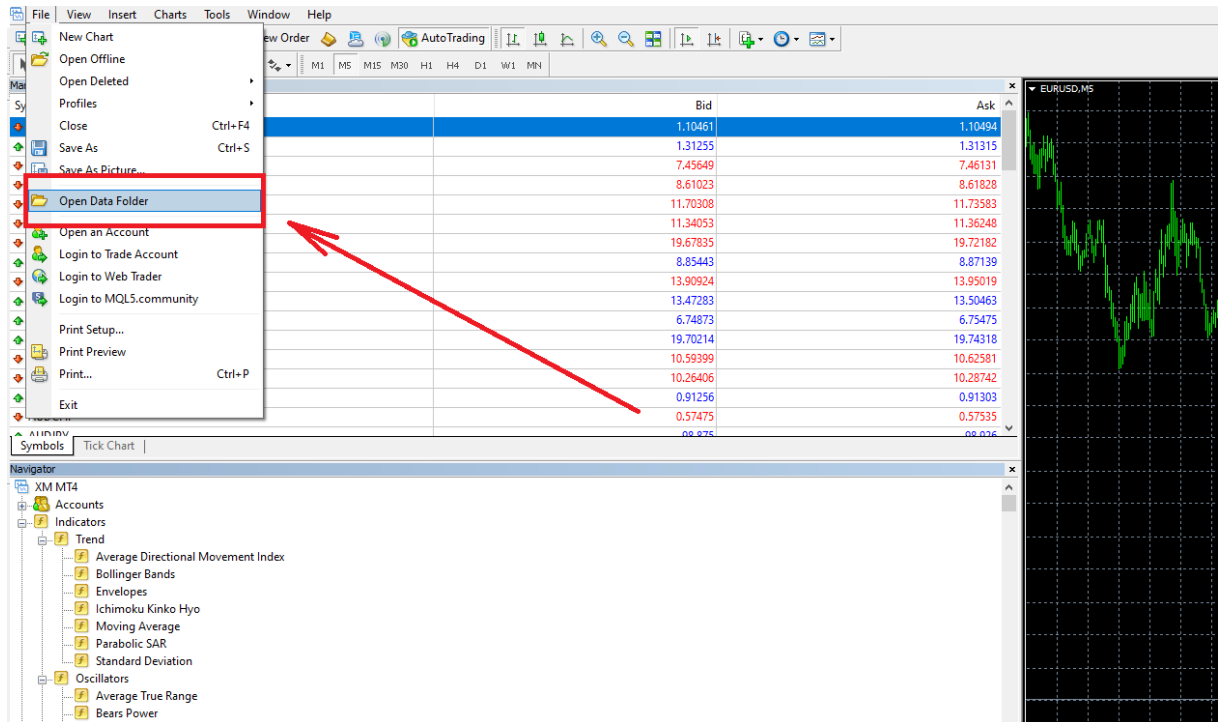
Signals generated by the system are not investment recommendations. All materials included on the website, as well as all system components (indicators, instruction manual) are for educational purposes only. Creators of the system will not take any responsibility for any profit or loss/damage caused by using the system.

Copyright © 2024 All rights reserved.

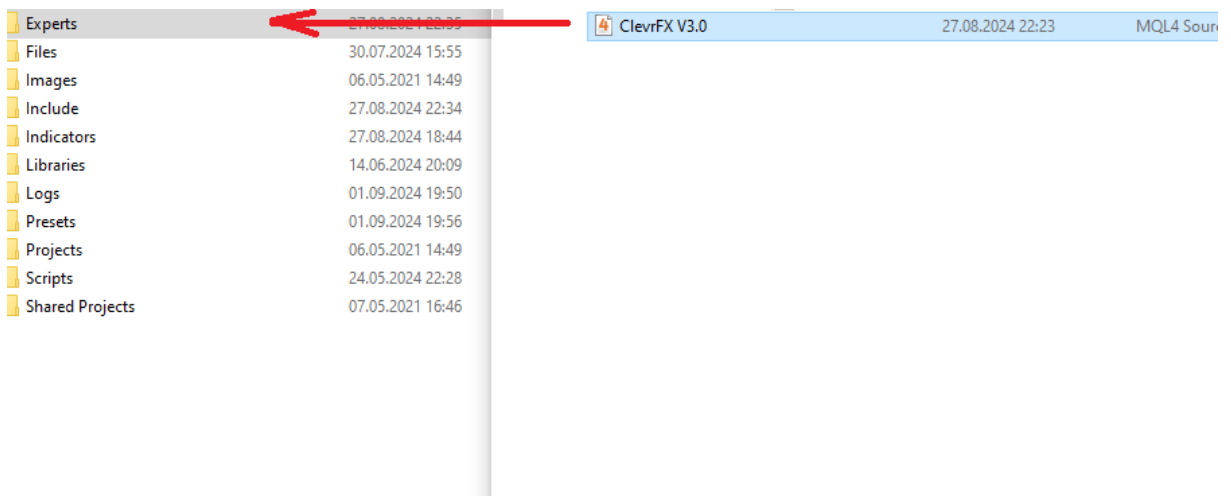
Unless otherwise indicated, all materials on these pages are copyrighted. All rights reserved. No part of these pages, either text or image may be used for any purpose other than personal use. Therefore, reproduction, modification, in any form or by any means, electronic, or otherwise, for reasons other than personal use, is strictly prohibited without prior written permission.

1. Installation proces.

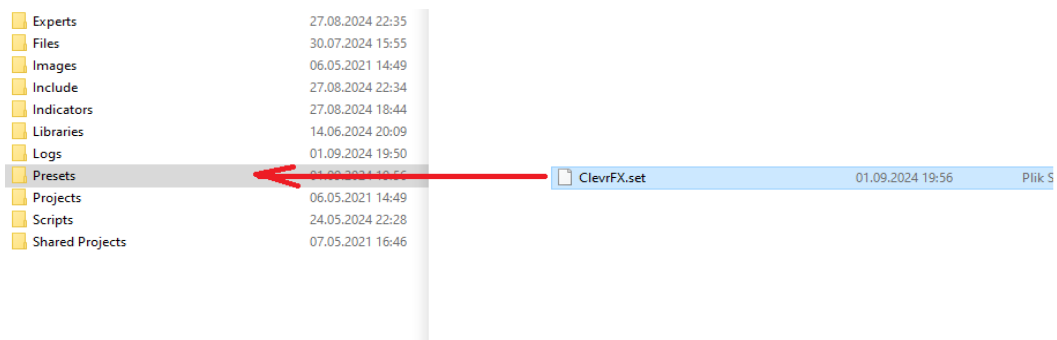
- Open your MT4
- Click 'File/Open Data Folder' from the top tab.



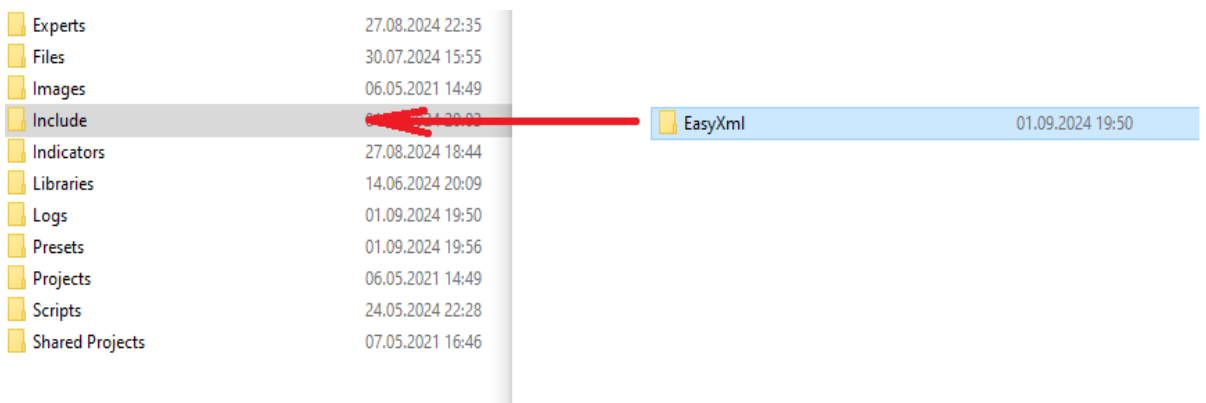
- Copy Clevr EA to the MQL4>experts folder



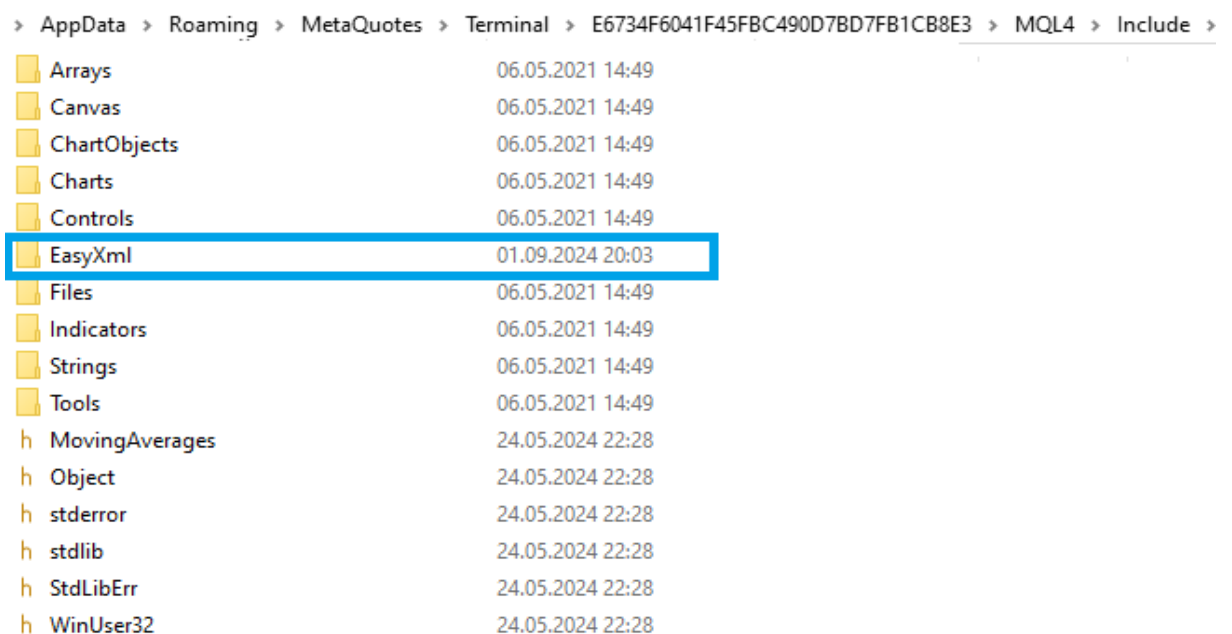
- Copy preset file to the MQL4>presets folder



- Copy whole EasyXml folder to the MQL4>Include folder
(the whole folder should be copied, not single files from it)



- This is how your MT4 Include folder should look like after copying EasyXml folder into it



- Restart your MT4

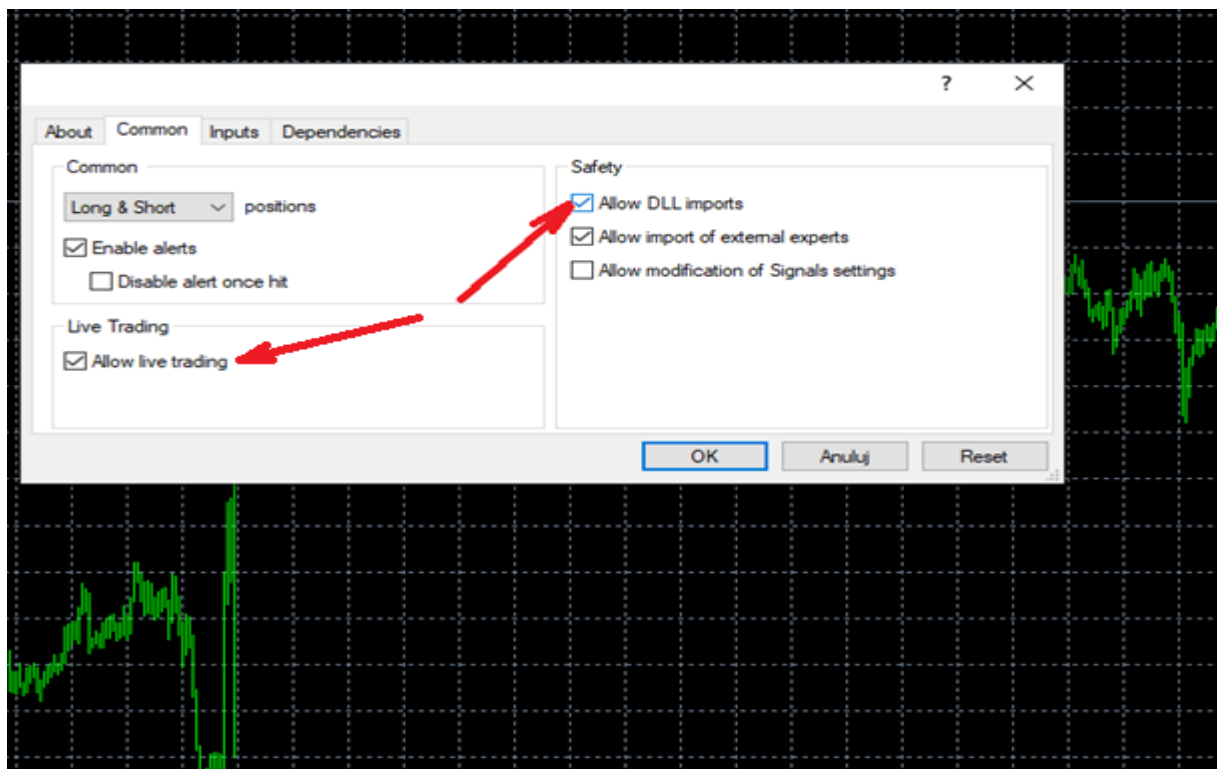
- Open a chart. Recommended pairs:

- Work Best on **EURUSD** and **GBPUSD**. (But it can be any pair)

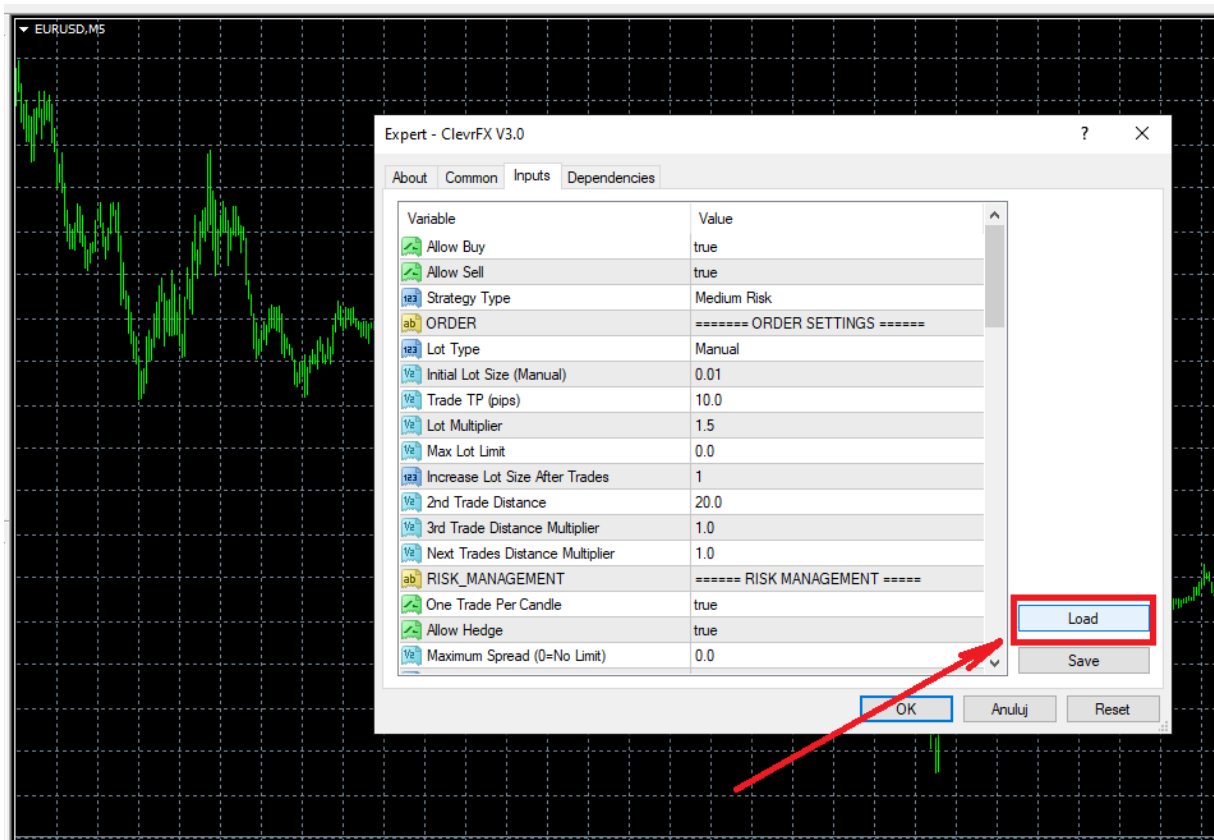
- Pick a timeframe:

- **Work Best on M5 and H1 Timeframe.**

- Place Clevr expert on the chart (you can simply drag it from navigator window). When an expert window appears mark 'Allow DLL Imports' and 'Allow live trading' under common tab.



- Switch to inputs tab and click 'load'



- When a new window appears pick ClevrFX set file

- Confirm with OK

- Expert is ready for trading.



IMPORTANT:

DO NOT RUSH FOR LIVE TRADING (THIS GOES ESPECIALLY TO THE TRADERS NEW TO EXPERT ADVISORS).

CLEVR EA CAN BE VERY PROFITABLE IN THE LONG RUN, BUT PLEASE MAKE AT LEAST ONE-TWO WEEK DEMO FORWARD TEST WITH YOUR BROKER TO KNOW HOW IT WORKS, WHAT NUMBER OF PAIRS ARE YOU COMFORTABLE WITH AND WHAT IS YOUR RISK APPETITE.

SETTINGS:

Expert is ready for trading with default set file.

We do not recommend changing the trading-type settings (RSI/MA settings) unless you have spent a lot of time with this expert and know how it works.

RECOVERY:

Recovery is enabled by default.

MONEY MANAGEMENT:

Expert uses by default 0.01 lot size. We recommend to start (both demo/real) with this value.

NEWS FILTER:

Expert will not open new trades 15minutes before and 30minutes after high/medium impact news (default recommended settings).

TRADING DAYS:

All days (Monday – Friday) are enabled by default, but if you are more conservative trader you can disable Friday trading (due to possible gap during the weekend).

If you encounter any issues or simply need assistance,
please send your query using contact form on our
website (bottom of the website).