

4EX TRADER

System Manual

Risk warning

Before you begin trading on Real account please carefully consider your investment goals, risk and experience you have. It should be noted that Forex is a leverage based market. It should be remembered that leverage can work both in your advantage and disadvantage as well. Therefore there is high risk of losing a part or all of your financial input placed on your account and because of that you should remember to trade with the amount of money which you can lose without taking any influential financial damage.

Disclaimer

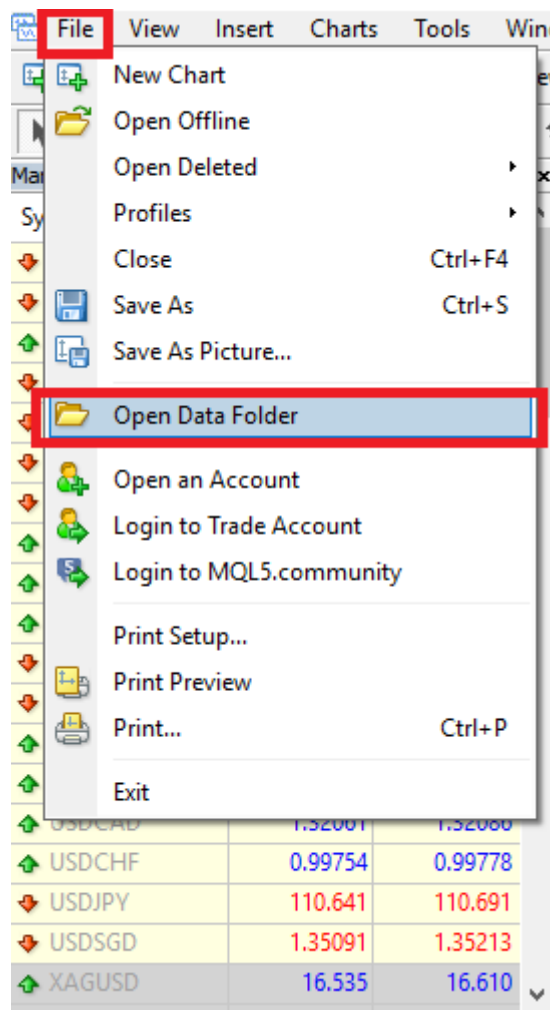
Signals generated by the system are not investment recommendations. All materials included on the website, as well as all system components (indicators, instruction manual) are for educational purposes only. Creators of the system will not take any responsibility for any profit or loss/damage caused by using the system.

Copyright © 2024 www.mt4ex.com All rights reserved.

Unless otherwise indicated, all materials on these pages are copyrighted. All rights reserved. No part of these pages, either text or image may be used for any purpose other than personal use. Therefore, reproduction, modification, in any form or by any means, electronic, or otherwise, for reasons other than personal use, is strictly prohibited without prior written permission.

1. Installation proces.

- Open your MT4
- Click 'File/Open Data Folder' from the top tab.



- Copy templates files to the 'Templates' folder.

config	15.06.2018 14:09
history	08.05.2018 16:03
logs	16.06.2018 09:40
MQL4	08.05.2018 16:01
profiles	13.06.2018 10:20
templates	15.06.2018 22:52
tester	13.06.2018 10:44
origin	08.05.2018 16:01

- Copy indicator files to the 'MQL4>Indicators' folder.

Experts	08.05.2018 16:02
Files	08.05.2018 16:01
Images	08.05.2018 16:01
Include	08.05.2018 16:01
Indicators	15.06.2018 22:29
Libraries	08.05.2018 16:02
Logs	16.06.2018 09:40
Presets	08.05.2018 16:01
Projects	08.05.2018 16:01
Scripts	08.05.2018 16:02

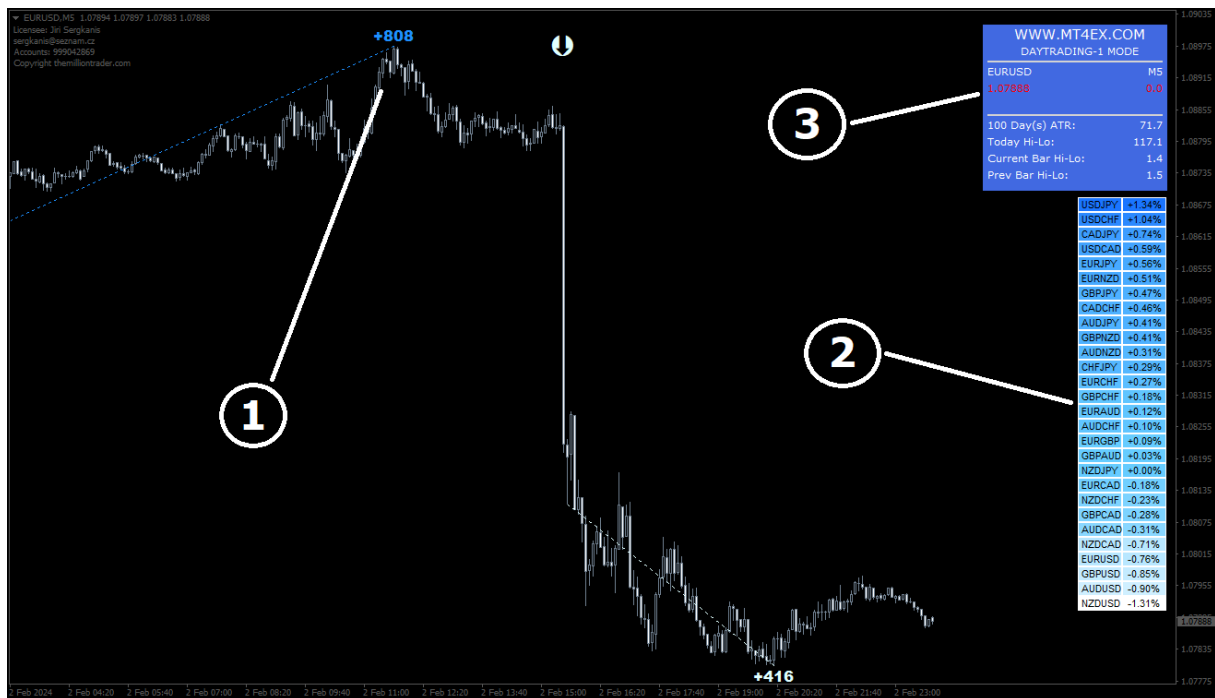
- Restart your MT4

- Open your favourite chart. Press the right mouse button and pick 4EX TRADER template depending on your risk appetite.
- 4EX SCALPING (Provides fastest signals with increased risk and also increased profit potential. Use it for scalping).
- 4EX DAYTRADING 1 (Provides balanced and stable signals. Perfect for most traders. Use it for typical daytrading or swingtrading).
- 4EX DAYTRADING 2 (Provides faster daytrading signals. It's also very versatile and can be used by most traders. Use it for typical daytrading or swingtrading).
- 4EX SWINGTRADING (Provides slower but more filtered signals. This is mode is recommended for swing/postion traders, or simply for traders who do not have much time for checking the charts).

SYSTEM OVERVIEW

System contains 3 main indicators:

1. Entry Indicator (BUY / SELL Signals).
2. Pairs Analyzer.
3. Dashboard Info (basic data like pair, spread, range etc.).



ENTRY EXAMPLE (SELL MARKET)

System signals are pretty straightforward. White arrows means sell market. We look for sell signals only.

When market trend will change, you will get main sell signal. After some time if the market will keep it's direction, you will also receive additional sell signals (smaller white arrows).

Every of those arrow are valid sell signal.



ENTRY EXAMPLE (BUY MARKET)

Buy signals works pretty much the same way. When the market will switch to the buy market, you will receive big blue arrow (main buy signal). When the market will move the same way, after some time you will also receive additional buy signals (smaller blue arrows).



STOP LOSS

Stop loss should be placed:

- Below the last swing low for BUY trades
- Above the last swing high for SELL trades

TAKE PROFIT

Take profit should be placed:

- R:R=1:1 when market moves slowly
- R:R=2:2 when market moves fast



PAIRS ANALYZER

Pairs analyzer is a very useful tool that shows the best trending pairs on the whole market.

Top pairs are of course the strongest (buy market), bottom pairs are the weakest (sell market) and you can also spot ranging pairs that have currently no direction (pairs that are in the middle of the dashboard).



USDJPY	+1.34%
USDCHE	+1.04%
CADJPY	+0.74%
USDCAD	+0.59%
EURJPY	+0.56%
EURNZD	+0.51%
GBPJPY	+0.47%
CADCHF	+0.46%
AUDJPY	+0.41%
GBPNZD	+0.41%
AUDNZD	+0.31%
CHFJPY	+0.29%
EURCHF	+0.27%
GBPCHF	+0.18%
EURAUD	+0.12%
AUDCHF	+0.10%
EURGBP	+0.09%
GBPAUD	+0.03%
NZDJPY	+0.00%
EURCAD	-0.18%
NZDCHF	-0.23%
GBPCAD	-0.28%
AUDCAD	-0.31%
NZDCAD	-0.71%
EURUSD	-0.76%
GBPUSD	-0.85%
AUDUSD	-0.90%
NZDUSD	-1.31%

HAPPY TRADING

Let us know if you need any assistance!

support@mt4ex.com